

What to Expect when Medicaid Service Decreases

Kai Monast

Institute for Transportation Research and Education

North Carolina State University

June 13, 2016

Losing Medicaid Transportation is Bad

- Destroys the coordinated model
 - Multiple publicly-supported providers in one area
 - Destroys steady progress made since the 1970's
- Removes Medicaid from the National Transit Database

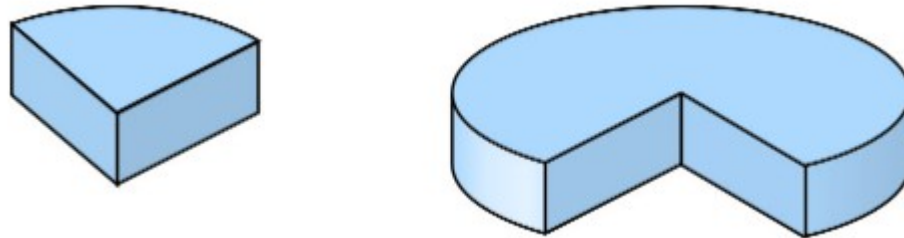


Image Source: <http://www.codeproject.com/>



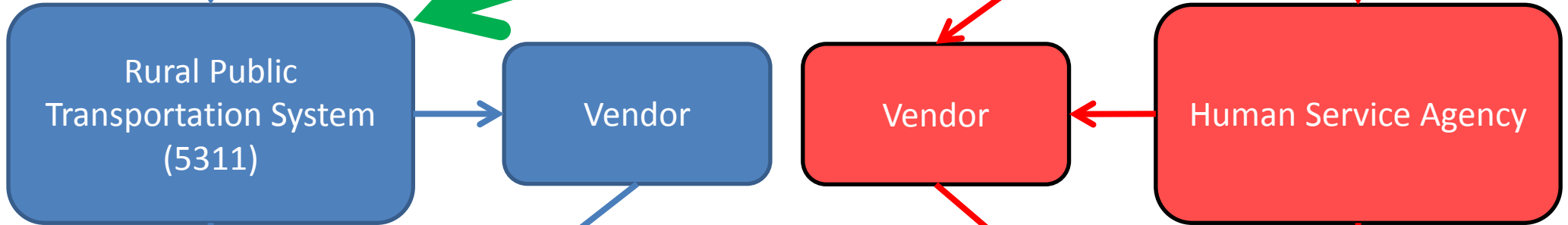
Image Source: <https://en.wikipedia.org/>

Reporting Model

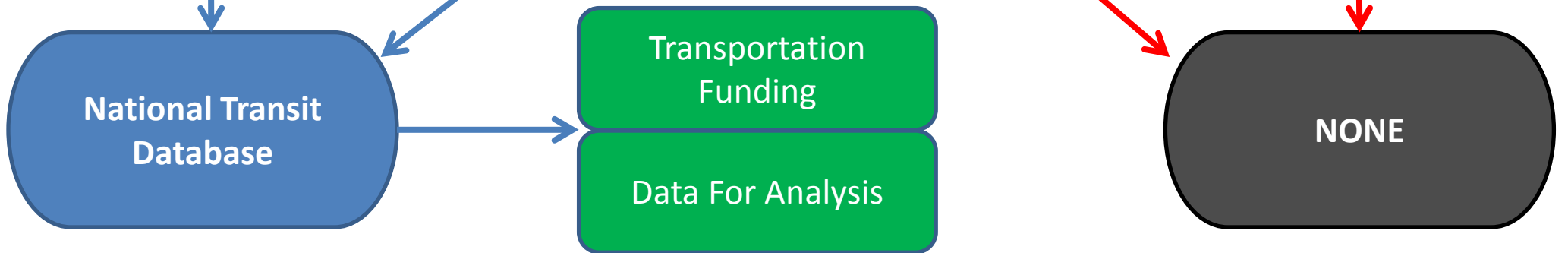
Trip Source



Provider



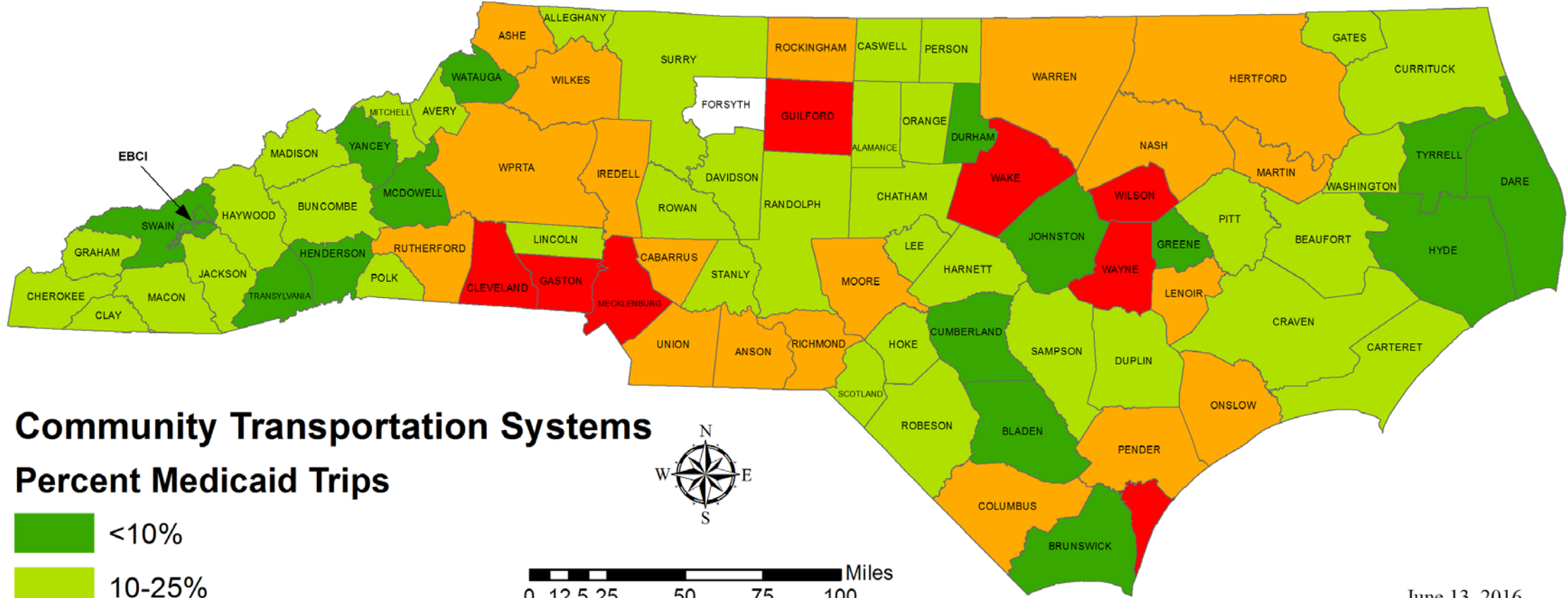
National Reporting System



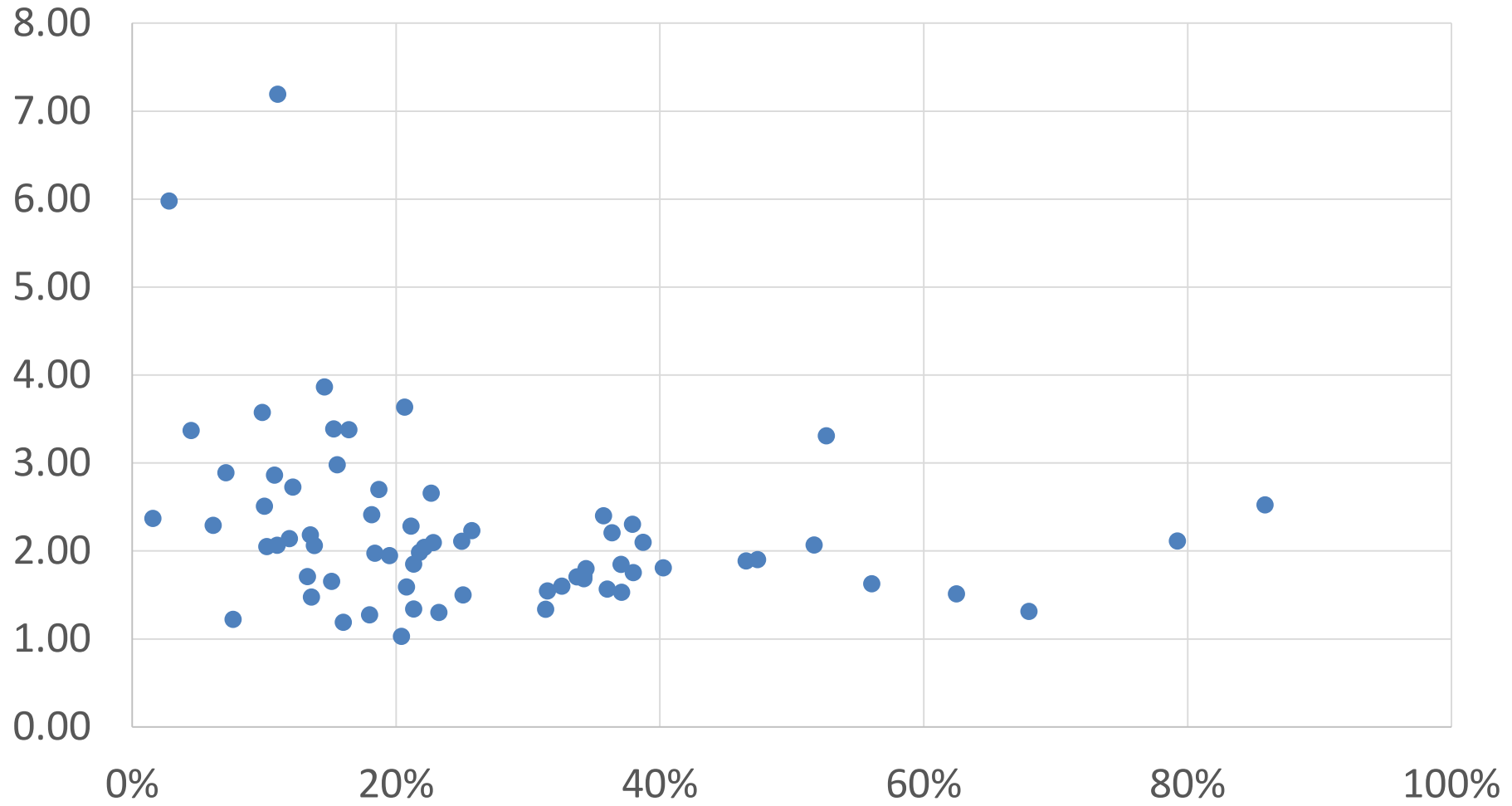
Positives and Negatives of Medicaid Transportation

	Pro	Con
Provides steady funding stream	X	
Keeps vehicles active during off-peak hours	X	
Focuses service delivery on the demand response model		X
Imposes strict policies that are usually applied to other trips		X
Makes transit less efficient		X
Removes focus from general public service		X
Increases per trip costs for other agencies		X

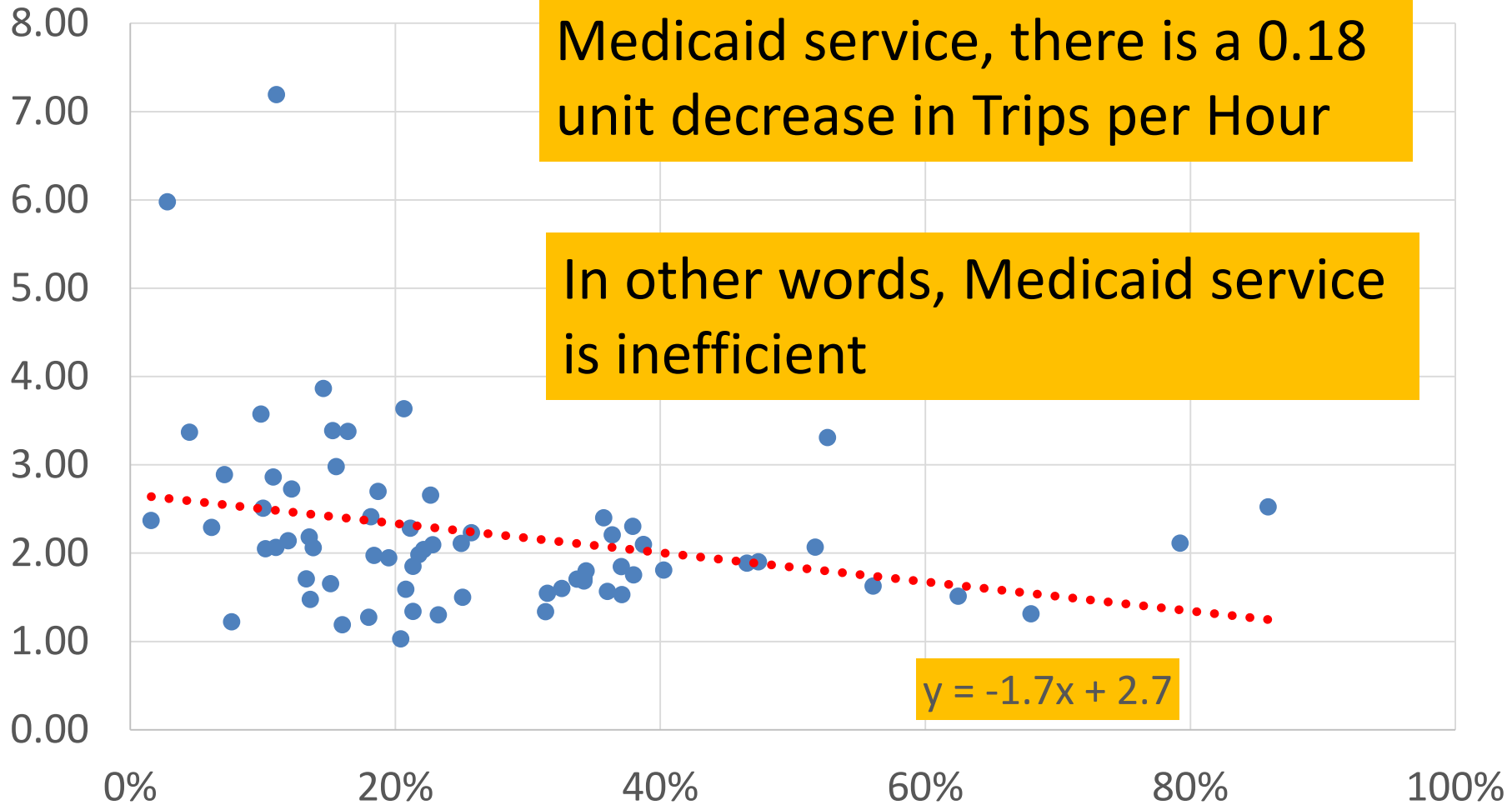
PERCENT MEDICAID TRIPS



June 13, 2016



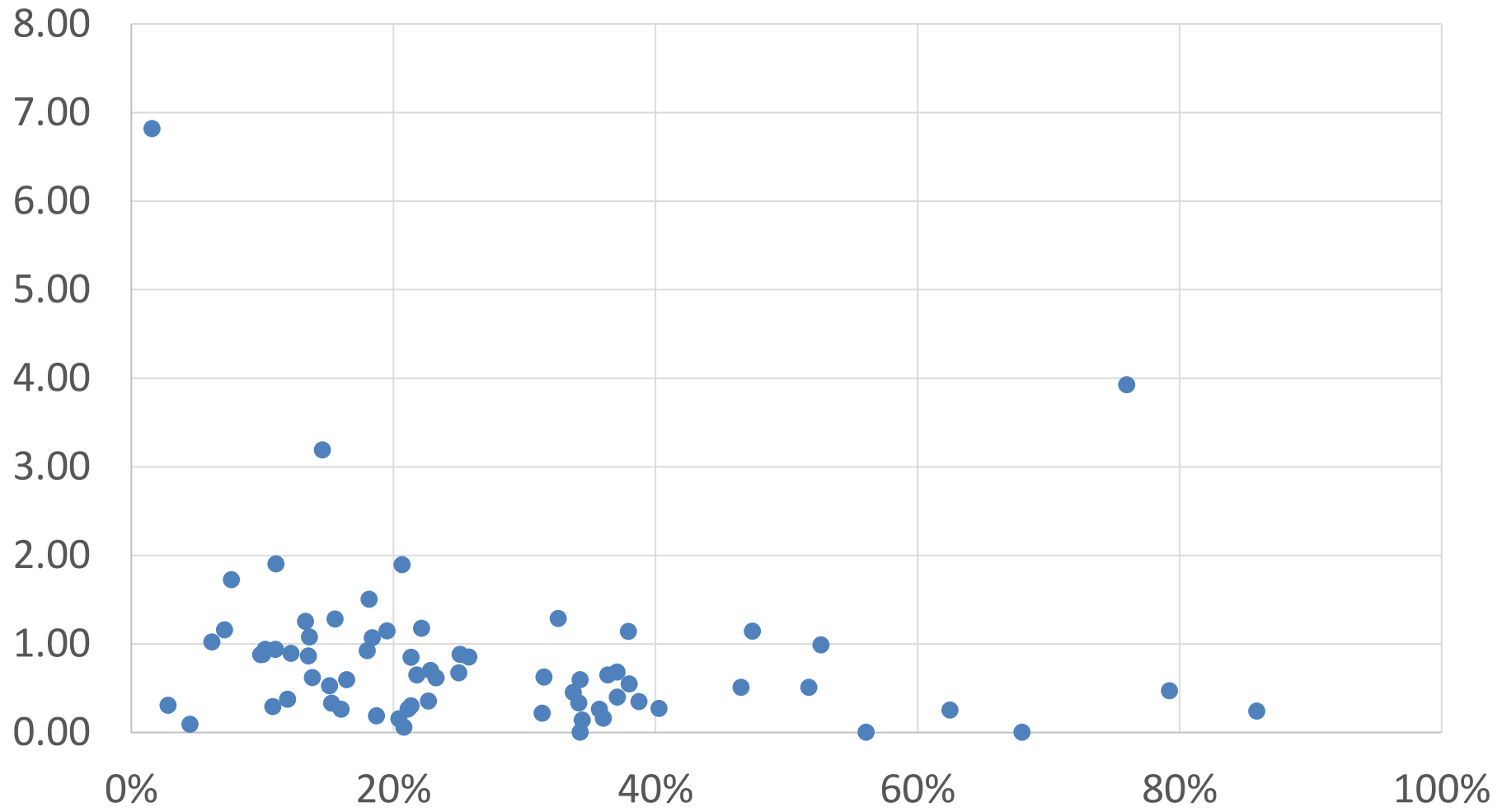
TRIPS PER HOUR AND PERCENT MEDICAID SERVICE



For every 10% increase in Medicaid service, there is a 0.18 unit decrease in Trips per Hour

In other words, Medicaid service is inefficient

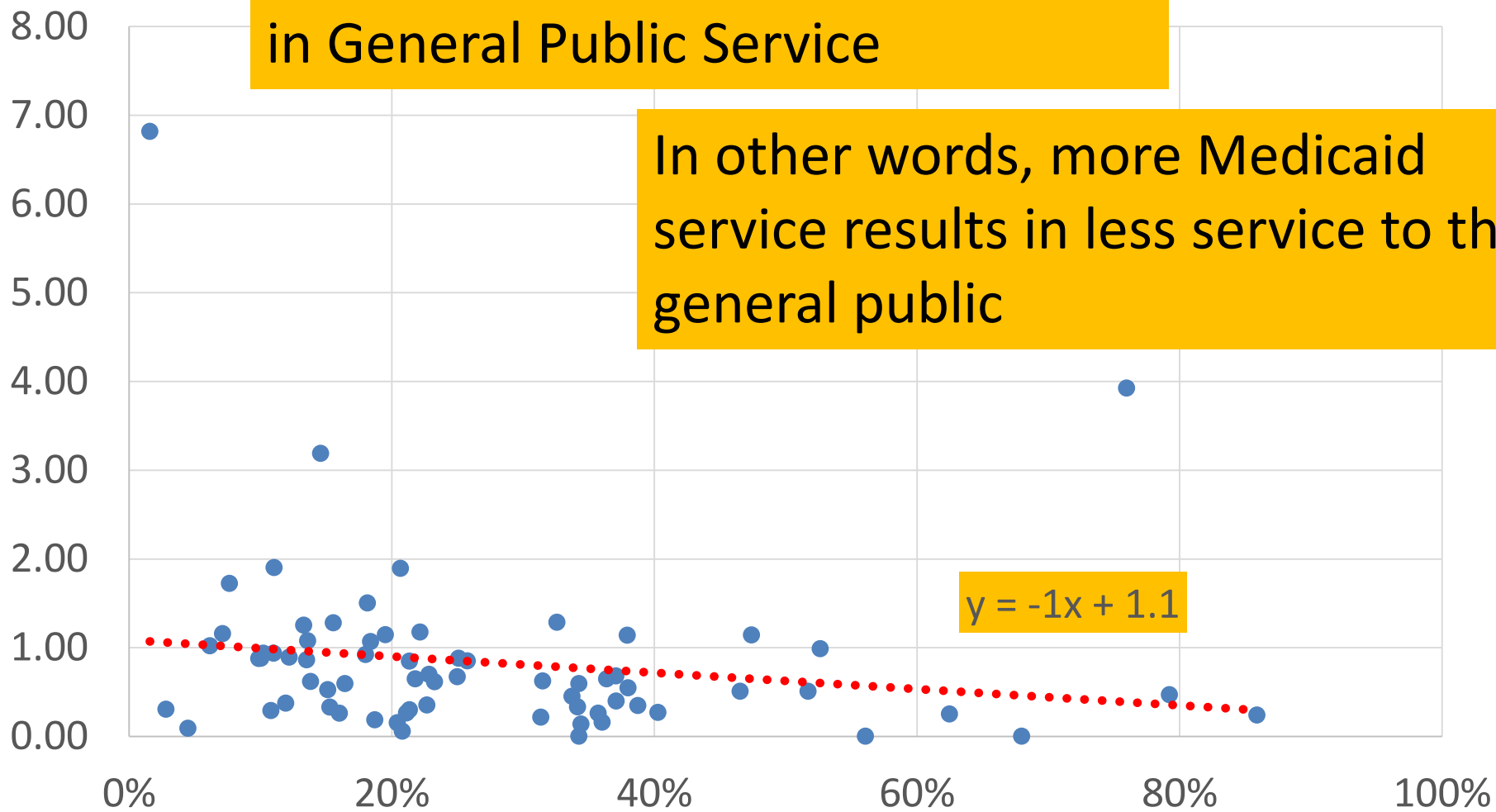
$y = -1.7x + 2.7$



GENERAL PUBLIC SERVICE AND PERCENT MEDICAID

For every 10% increase in Medicaid service, there is a 0.1 unit decrease in General Public Service

In other words, more Medicaid service results in less service to the general public



Good Matches?

Peer Group	Rural Population	Non-Medicaid Trips
2	43,444	52,109
2	38,117	50,933
Peer Group	Rural Population	Non-Medicaid Trips
4	48,385	22,436
4	51,093	27,234

Both have urban fixed route service provided by another system

Same sized counties, close proximity, no large towns

What Can Happen When Medicaid Decreases?

	Peer Group	Rural Population	Non-Medicaid Trips	Medicaid Trip Percent	Cost per Trip	Subsidy per Trip	Trips per Hour	General Public Service Index
High Medicaid	2	43,444	52,109	39%	\$ 16.32	\$ 4.72	2.10	0.35
Low Medicaid	2	38,117	50,933	10%	\$ 15.65	\$ 8.05	3.57	0.88
Difference					\$ (0.67)	\$ 3.33	1.48	0.53
	Peer Group	Rural Population	Non-Medicaid Trips	Medicaid Trip Percent	Cost per Trip	Subsidy per Trip	Trips per Hour	General Public Service Index
High Medicaid	4	48,385	22,436	36%	\$ 23.79	\$ 8.31	1.57	0.16
Low Medicaid	4	51,093	27,234	11%	\$ 17.39	\$ 9.25	2.86	0.29
Difference					\$ (6.40)	\$ 0.95	1.30	0.13

Setting You Free?

- New Service Design
- New Funding Agencies
- New Customers
- Enhanced Coordination
- New Billing Rules
- New Service Policies



Image Source: <http://australianmuseum.net.au/>

What to Expect when Medicaid Service Decreases

Kai Monast

Institute for Transportation Research and Education

North Carolina State University

June 13, 2016